

高性能静电粉末涂层板

HIGH-PERFORMANCE POWDER COATED STEEL SHEETS

用科技创新 改善人类生活环境

BUILDING A BETTER FUTURE



山东圣士达机械科技股份有限公司

山东圣士达新材料科技有限公司

山东圣士达环保科技有限公司

地址：山东省海阳市碧城工业园山海路15号

邮编：265100

电话：0535-3635988

网址：www.hyssd.com

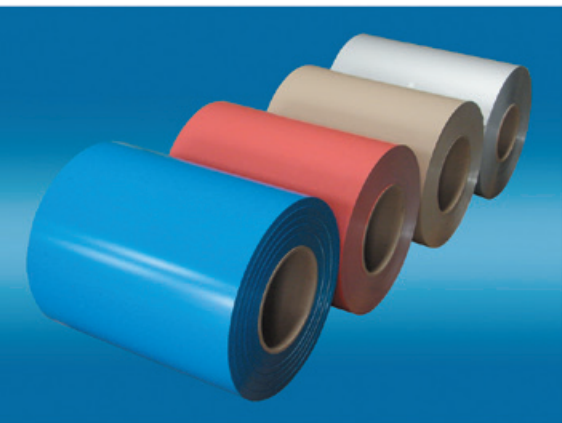
邮箱：dsc@hyssd.com



目录

CONTENTS

企业简介	01
我们的专业知识	02
可行性分析报告	03
我们的产品	04
产品分类	05
高性能静电粉末涂层板	06
高性能静电粉末涂层与溶剂型油漆涂层对比	07
聚酯静电粉末涂层板	08
富锌静电粉末涂层板	09
高耐候静电粉末涂层板	10
超耐候静电粉末涂层板	11
静电粉末涂层闪烁效果板	12
静电粉末涂层其他纹理板	14
静电粉末涂层自清洁板	15
静电粉末涂层抗菌板	16
静电粉末涂层隔热节能板	17
静电粉末涂层阻燃板	18
静电粉末涂层抗静电板	19
静电粉末涂层耐高温板	20
静电粉末涂层PCM家电板	21



企业简介

COMPANY PROFILE

山东圣士达机械科技股份有限公司成立于2005年3月，注册资本6235.75万元人民币，2015年在新三板挂牌上市（股票代码834812）。目前，公司旗下拥有2家子公司：山东圣士达新材料科技有限公司（环保粉末彩钢卷、环保装饰材料及专用环保型粉末涂料）、山东圣士达环保科技有限公司（环保除尘设备、智能粉末涂装生产线）。

公司是集研究、设计、制造粉末机械和提供粉末生产线整体解决方案于一体的专业化高新技术企业，国家专精特新小巨人、山东省瞪羚企业，公司占地面积约8万平方米。我公司的粉末设备共有九大系列五十八种产品，包括自动配料机、混合机、邦定混合机、挤出机、压片机、磨粉机、自动包装线、以及相配套的实验室专用粉末生产线，环保除尘设备、智能涂装生产线，产品畅销全国各地并远销到中东、东南亚、日韩、欧美等国家和地区。

公司从成立之日起就立足于走科技创新之路，与山东大学、山东科技大学进行产学研合作，先后成立省级“一企一技术”研发中心、山东大学圣士达智能装备研究中心。公司以科技为先导，不断开发技术含量高的粉末设备，适销对路的优质产品，至今已经获得由国家知识产权局授权的专利85项：发明专利7项、实用新型专利76项和外观设计专利1项、计算机软件著作权1项以及知识产权体系认证、ISO9001认证、ISO14001认证、CE认证、防爆认证、双软认证等多项认证证书。其中自动配料机、智能研磨机、粉末涂料工艺控制系统、智能粉末涂料生产系统等更是填补国内空白，是粉末涂料生产设备行业中的领先产品。

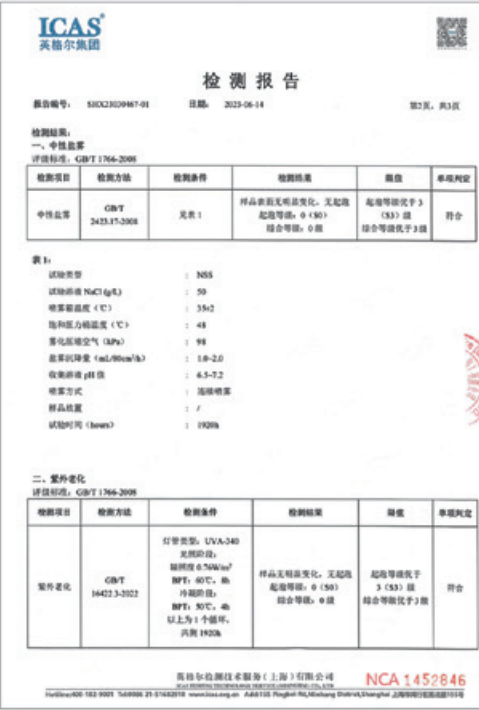
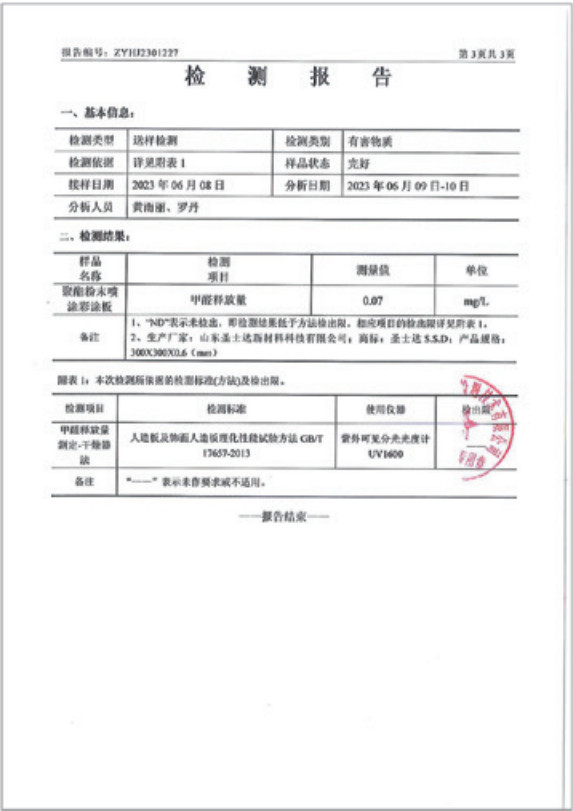
本公司致力于研发智能化节能减排低噪音制粉设备及环保除尘设备，旨在推动社会信息化、智能化、无污染的发展，目前本公司设备的销售额处于行业第一的位置，并积极参与行业标准的制定。



山东圣士达新材料科技有限公司是山东圣士达机械科技股份有限公司旗下一家专注于高性能环保粉末彩涂卷、环保装饰材料及专用环保型粉末涂料研发、制造、销售于一体的技术型企业。

圣士达高性能环保粉末彩涂卷是采用静电吸附式涂装工艺，在基板表面喷涂高分子粉末涂料，经高温固化形成高致密性涂层，涂层牢固附着于基板表面而形成新型“板材”。

圣士达高性能环保彩涂卷具有超高致密、超强耐蚀、零甲醛排放、耐火性达到A2级、耐候性可与建筑物同寿命，耐酸碱性能是传统油漆彩涂板的5-6倍，被称为“新一代环保彩涂板”。



市场前景分析

传统的喷粉行业如家电行业、防火门行业、型材行业等，生产工艺流程为：镀锌板加工成型→前处理→喷涂粉末→烘烤固化→冷却→组装。采用预涂粉末彩涂板替代后，工艺变得简单：粉末彩涂板加工成型→组装，预涂粉末彩涂板的应用，解决了他们的环保压力、安全压力，降低了制造成本，减少了用人数量，提高了自动化程度。

粉末彩涂板折弯不开裂，完全满足机械加工的要求，也可一次性涂装35-200微米，加厚耐用表面效果更丰富。

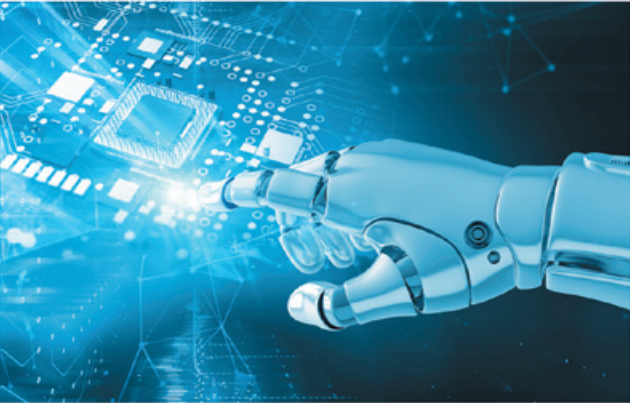
家电行业：传统的家电行业是以粉末作为涂层，将镀锌板加工成型后喷涂粉末，家电行业对于粉末涂料的认知已不再陌生，预涂彩钢板的出现可大大降低家电制造的成本。

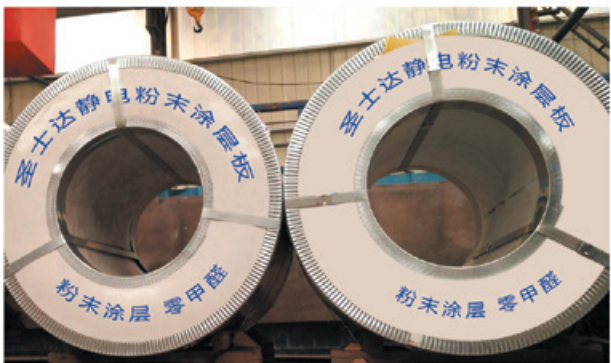
建筑行业：建筑用粉末彩涂板因涂层致密性强，在耐腐蚀性、耐候性方面都得到极大的提高，产品质量已远超同类油漆彩涂产品，同时也拥有相对较低的成本可广泛应用于民用及一般工业建筑。另外涂层厚度可一次性涂装超过200微米，涂层更耐久，可与建筑同寿命，更适合于高规格地标性建筑要求如纪念馆、机场、高铁站等的建设。

装饰行业：粉末彩涂板的表面完全达到净化板的要求，平整光滑，并且可以实现木纹效果、金属效果、抗菌效果，目前已在装饰行业得到大力推广如医疗、写字楼、机场、高铁站、大型场馆等的屋内装饰。

钢制门行业：传统钢质防火门存在工序繁杂、效率低下、人工成本高、环保压力不断增大，而预涂彩钢板全新升级传统钢质防火门生产工艺，安全、环保、无污染、零甲醛，能有效提升生产效率、降低生产成本。

灯具照明行业：灯具照明行业对板材的需求量非常大，现有工艺以板材冲压成型后，经过化学前处理再进行粉末喷涂，存在的问题成本高效率低，现在使用高速粉末预喷涂板材，大幅降低了客户的使用成本，非常明显的提高的生产效率。





高性能静电粉末涂层板
High-performance
Powder Coated
Steel Sheets

分类 Classification	产品系列 Product Series	产品名称 Product Name	Code 代 码	特 性 Characteristics	应用领域 Application
高性能静电粉末涂层板 High-performance Powder Coated Steel Sheets	聚酯系列 Polyester Series	聚酯涂层板 Polyester Coated Steel Sheet	PE	附着性好，易于加工成型 Good adhesiveness, easy to process & form	建材、装饰板、卷帘门、钢制门、家电等 Building materials, decorative sheet, roller shutter door, steel door, household appliance, etc.
		Zinc-rich Coated Steel Sheet 富锌涂层板	KG	涂层含有锌成份，防腐性能良好 Good anti-corrosion effect produced by Zinc-rich coating	建材、金属构件、电缆桥架、装饰板、卷帘门、钢制门等 Building materials, metal component, cable tray, decorative sheet, roller shutter door, steel door, etc.
	耐候系列 High Durable Series	高耐候板 High Durable Coated Steel Sheet	HDP	耐候性和耐化学性能非常好 Good weather & chemical resistance	建材、航站楼、地铁站、别墅、潮湿、腐蚀严重地区等 Building materials, airport terminal, subway station, villa, areas exposed to high humidity or severe corrosion, etc.
		超耐候板 Super Durable Coated Steel Sheet	PVDF	防蚀性、色泽保持性，耐化学性能非常好 Excellent color retention & corrosion and chemical resistance	对品质要求极高的标志性建筑及特殊用途 Landmark buildings & special purposes with extremely high requirements for quality
	装饰系列 Decoration Series	闪烁效果板 Blinking effect board	JS	美观、绚丽的金属装饰效果 Beautiful and gorgeous effects of metal decoration	建材、装饰、外墙板、天花板、钢制门、家电等 Building materials, decoration, outdoor wall panel, ceiling, steel door, household appliance, etc.
		木纹板 Wood-grain Coated Steel Sheet	MW	木纹的立体质感，轻质、美观、耐用、防腐蚀 3D wood-grain texture, light, beautiful, durable & anti-corrosion	建材、装饰、外墙板、天花板、钢制门、家电、家具 Building materials, decoration, outdoor wall panel, ceiling, steel door, household appliance, furniture, etc.
		其他纹理板 Other-texture Coated Steel Sheet	WL	水纹、花纹、皱纹、砂纹等纹理，效果美观 Various beautiful textures, e.g. water waves, decorative patterns, wrinkles and sand grains	建材、装饰、外墙板、天花板、酒柜、家电、家具 Building materials, decoration, outdoor wall panel, ceiling, wine cabinet, household appliance, furniture, etc.
	功能系列 Function Series	自清洁板 Easy-cleaning Coated Steel Sheet	ZC	防污自洁功能，有效防止灰尘油污渗入 Effective prevention of the permeation of dust and greasy dirt realized through antifouling and easy-cleaning functions	高层建筑外墙板、空气污染较重工业区厂房等 Outdoor wall panels of high rises, workshops in the industrial districts severely-stricken by air pollution, etc.
		抗菌板 Antibacterial Coated Steel Sheet	KJ	涂层中含抗菌剂，有极强的抑菌功效 Extremely high-efficient antibacterial agents contained in the coating	厨房电器、家用电器、医疗设备及对环境卫生要求较高的场所 Kitchen & household appliance, medical facilities and places with high requirements for environmental health
		隔热节能板 Heat-insulating Energy-saving Coated Steel Sheet	WK	可反射太阳光照热源，降低室内温度 Reflecting sunlight to lower indoor temperature	建筑屋面板、外墙板、车棚 Building roofing, outdoor wall panel, car roof, etc.
	工业系列 Industry Series	阻燃板 Fire-retardant Coated Steel Sheet	ZR	抑制火焰对结构物质的加速破坏 Retarding the damage to the structures by fire	电气产品、高低压开关柜等 Electrical products, HV/LV switch cabinets, etc.
		抗静电板 Anti-static Coated Steel Sheet	DD	可有效传导电流、消散电荷 Conducting current & dissipating electric charges effectively	电子工业、石油工业、纺织工业、橡胶工业等相关领域 Electronic, petroleum, textile, rubber industries and other related fields
		耐高温板 High-temperature Resistant Coated Steel Sheet	NT	提供200- 350℃不同耐高温板 Various temperature-resistant capabilities from 200 to 350 °C	烘烤炉、汽车排气筒等有耐热要求的产品 Products with heat-resistant requirements, e.g. baking ovens and exhaust funnels of autos
	家电系列 Household Appliance Series	粉末涂层PCM 家电板 Powder Coated PCM Household Appliance Steel Sheet	JD	成型加工性、涂层耐腐蚀性和柔韧性良好 Good formability, machinability, flexibility & corrosion resistance	冰箱、洗衣机、空调、烤箱等家电产品 Household appliances, e.g. refrigerators, washing machines, air conditioners and ovens



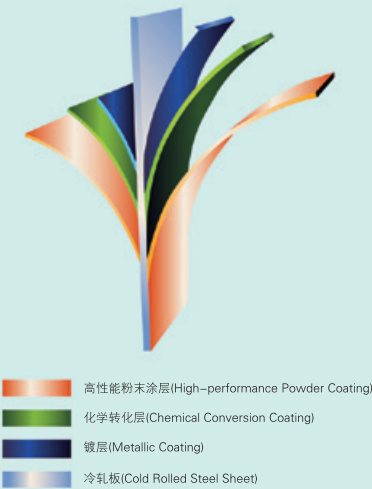
高性能静电粉末涂层板
High-performance Powder Coated Steel Sheets

拥有30万吨产能粉末涂层板生产线，采用国际先进技术，实现涂层一次涂装成型。生产线全自动化，绿色清洁生产，设备、涂层材料都拥有多项国家发明专利，完全革新了传统彩涂板的生产方式，改变了原有工艺油漆污染重、作业不安全、能耗高的弊端，粉末涂层多项性能优于传统油漆涂层。

粉末涂层所用的原料是基于多种高性能新材料，不含任何溶剂，零VOC，具有节能、安全环保，附着

力、耐候性、耐腐蚀性极好等特点。

We adopts a fully automatic production line to achieve the green and clean manufacturing of powder coated steel sheets, the capacitybeing 300,000t/a. Besides, with internationally advanced technologies, we can realize one-time coating. Both our equipment and coating materials have obtained lots of national invention patents. We completely reform the traditional production modes of prepainted steel sheets and weed out the disadvantages of the original processes like serious paint pollution, unsafe operation and high energy consumption. Besides, many properties of the powder coatings are superior to those of the old paint ones. Based on multiple high-performance new materials, the raw materials employed for powder coating are free of solvent and VOC. And they enjoy the characteristics of energy conservation, safety, environmental protection as well as excellent adhesive force, weather resistance and corrosion resistance.



高性能静电粉末涂层与溶剂型油漆涂层对比
High-performance Powder Coating VS Solvent-based Paint Coating

项目 Item	高性能粉末涂层 High- performance Powder Coating	溶剂型油漆涂层 Solvent- based Paint Coating
成膜物质 Film Substance	高分子树脂 Polymer resin	树脂 Resin
外观状态 Status	粉末状固体 Powder	粘稠性液体 Viscous liquid
安全方面 Safety	阻燃、储存、运输、使用非常安全 Flame retardant Safe for storing, transporting and using	易燃、易爆、存在安全隐患 Flammable, explosive, and posing safety hazards
涂装方式 Coating Mode	静电吸附式涂装 Electrostatic adsorption coating	辊涂、喷涂 Roller coating and spraying
耐候性 Weather resistance	5-8 / 10-15 / 20-30年	2-3 / 5-8 / 10-15年
利用率 Utilization Ratio	接近100% Approximate to 100%	40-70%
环保性 Environmental Protection	无毒、无味、无VOC 、无排放 、绿色环保 Non toxic, odorless, VOC free, emission free, green and environmentally friendly	刺激性气味、大量VOC 、有废水 、废渣排放 Irritating odor, large amount of VOC, wastewater, and waste residue discharge
T 弯测试 T- bend Test	0T-2T	≤ 3T
反向冲击 Reverse Impact	≥ 9J	≥ 9J
涂层厚度 Coating Thickness	20-100 μ m	15- 30 μ m



聚酯静电粉末涂层板
Polyester Coated Steel Sheet

聚酯系列
PolyesterSeries

- ▲ 钢板强度有CQ一般商用级、DQ一般冲压用、HSS高强结构钢、FH全硬钢
- ▲ 板厚0.17–1.2mm，宽度600–1250mm，镀层量80–200g/m²，涂层厚度 20–60 μ m
- ▲ 涂层与基板有良好的附着性，易于加工成型，有良好的耐候性能和室外稳定性。在一般环境中应用，视镀层与涂层要求不同，防腐蚀性能可达7–8年。同时拥有多种亮丽的色彩可供选择
- ▲ 可用于建筑屋面板、外墙板、装饰板、卷帘门、钢制门、家电等产品

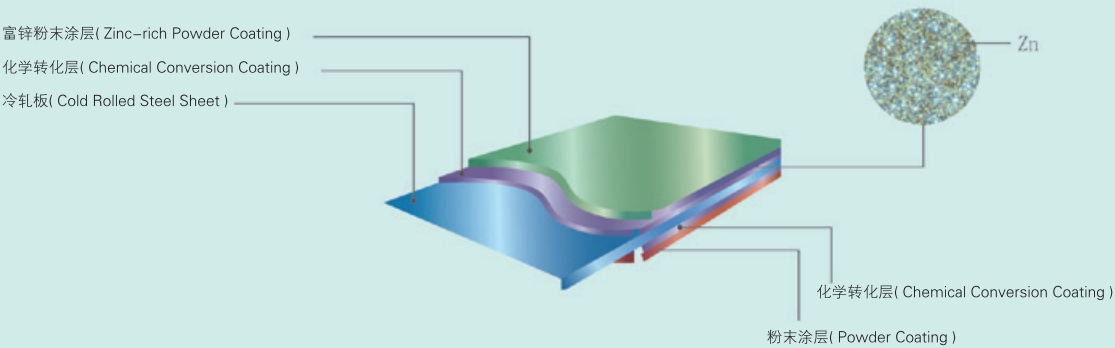
- ▲ Strength of steel plate: commercial quality (CQ), drawing quality (DQ), high strength steel (HSS) and full hard steel (FH)
- ▲ Plate thickness: 0.17-1.2mm, width: 600-1250mm, coating mass: 80-200g/m², powder coating thickness: 20-60μm
- ▲ Well adhering to the base plate, the coatings are easy to process and form, good weather resistance and outdoor stability. When used in general environments, the anti-corrosion effect may last for 7-8 years, depending on the requirements for the coating mass and powder coating layers. Products of various bright colors are provided for selection.
- ▲ Scopes of application: building roofing, outdoor wall panel, decorative sheet, roller shutter door, steel door, household appliance, etc.



富锌静电粉末涂层板
Zinc-rich Coated Steel Sheet

聚酯系列
PolyesterSeries

富锌涂层板剖面结构示意图
Sketch Map of the Sectional Structure of Zinc-rich Coated Steel Sheet



- ▲ 钢板强度有CQ一般商用级、DQ一般冲压用、HSS高强结构钢、FH全硬钢
- ▲ 板厚0.17–1.2mm，宽度600–1250mm，涂层厚度30– 80 μ m
- ▲ 基板选用冷轧板，涂装后，依靠涂层中含有的锌成份，增强其防腐蚀性能
- ▲ 可用于一般建材、金属构件、电缆桥架、装饰板、卷帘门、钢制门等产品

- ▲ Strength of steel plate: commercial quality (CQ), drawing quality (DQ), high strength steel (HSS) and full hard steel (FH)

- ▲ Plate thickness: 0.17-1.2mm, width: 600-1250mm, powder coating thickness: 30-80μm
- ▲ Cold rolled steel sheets are chosen as the base plate. When finished, the zinc contained in the coating improves the anti-corrosion performance of the steel.
- ▲ Scopes of application: building material, metal component, cable tray, decorative sheet, roller shutter door, steel door, etc.

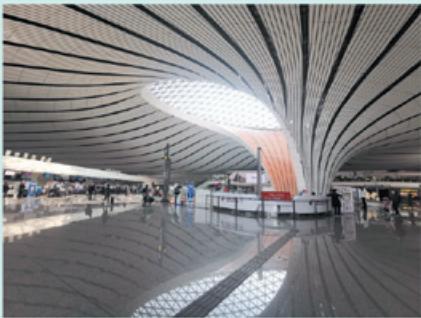


富锌涂层板 VS 普通涂层板
Zinc-rich Powder Coated Steel Sheet VS Ordinary Coated Steel Sheet

高耐候静电粉末涂层板
PHigh Durable Coated Steel Sheet

耐候系列
High Durable Series

- ▲ 钢板强度有CQ一般商用级、DQ一般冲压用、HSS高强结构钢、FH 全硬钢
- ▲ 板厚0.5–1.2mm，宽度600–1250mm，镀层量80–275g/m²，涂层厚度30–60 μ m
- ▲ 涂层与基板有良好的附着性，有非常好的耐候性能和耐化学性能。在一般环境中应用，视镀层与涂层及颜色要求不同，防腐性能可达10–15年。不建议选用过于艳丽的色彩。
- ▲ 可用于对品质要求较高的建筑屋面板、外墙板、航站楼、地铁站、别墅、化工、电力、沿海潮湿地区、腐蚀严重地区等



- ▲ Strength of steel plate: commercial quality (CQ), drawing quality (DQ), high strength steel (HSS) and full hard steel (FH)
- ▲ Plate thickness: 0.5-1.2mm, width: 600-1250mm, coating mass: 80-275g/m², powder coating thickness: 30-60μm
- ▲ Well adhering to the base plate, the coatings are of excellent weather and chemical resistance. When used in general environments, the anti-corrosion effect may last for 10-15 years, depending on the requirements for the coating mass and powder coating layers. Excessive bright colors are not recommended.
- ▲ Scopes of application: building roofing, outdoor wall panel, airport terminal, subway station, villa, chemical industry, electricity, coastal humid areas, areas exposed to severe corrosion, etc. which have high requirements for quality.



超耐候静电粉末涂层板
Super Durable Coated Steel Sheet

耐候系列
High Durable Series



- ▲ 钢板强度有CQ一般商用级、DQ 一般冲压用、HSS高强结构钢、FH全硬钢
- ▲ 板厚0.5–1.2mm，宽度600–1250mm，镀层量80–275g/m²，涂层厚度30–60 μ m
- ▲ 超耐候氟碳涂层的化学键与化学键间，有很强的键能，且分子量大又为直键型结构，因此涂层有非常好的防蚀性和色泽保持性，除耐化学药性之外，机械性能、耐紫外线和耐热性能也很突出。涂层有极好的疏水性能，且斥油，极小的摩擦系数，不会粘尘结污，防污性能好。防腐性能可达20—25年。不建议选用过于艳丽的色彩。
- ▲ 用于对品质要求极高的标志性建筑及特殊用途。

- ▲ Strength of steel plate: commercial quality (CQ), drawing quality (DQ), high strength steel(HSS)and full hard steel (FH)
- ▲ Plate thickness: 0.5-1.2mm, width: 600-1250mm, coating mass: 80-275g/m², powder coating thickness: 30-60μm
- ▲ Because of the strong bond energy between the chemical bonds of super weather-resistant fluorocarbon, the large molecular weight and the straight bond structure, the coatings enjoy excellent corrosion resistance and color retention. Apart from outstanding resistance of chemicals, the coatings also feature good mechanical properties, and excellent resistance of UV and heat. The anti-corrosion effect can last for 20-25 years. With the ultra-low friction coefficient, the coatings' hydrophobicity, oil repellence and antifouling performance are also superior. However, excessive bright colors are not recommended.
- ▲ Scopes of application: landmark buildings and special purposes with extremely high requirements for quality

静电粉末涂层闪烁效果板
Electrostatic powder coating scintillation effect board

装饰系列
Decoration Series

- ▲ 钢板强度有CQ一般商用级、DQ一般冲压用、HSS高强结构钢、FH全硬钢
- ▲ 板厚0.17-1.2mm，宽度600-1250mm，镀层量80-200 g/m²，涂层厚度20- 60 μ m
- ▲ 涂层具有3D、变色龙、银色闪烁、金色闪烁等绚丽的金属装饰效果。与基板有良好的附着性，易于加工成型，有良好的耐候性能和室外稳定性。在一般环境中应用，视镀层与涂层要求不同，防腐性能可达7- 8年
- ▲ 可用于建材、装饰、外墙板、天花板、钢制门、家电等产品



- ▲ Strength of steel plate: commercial quality (CQ), drawing quality (DQ), high strength steel (HSS) and full hard steel (FH)
- ▲ Plate thickness: 0.17-1.2mm, width: 600-1250mm, coating mass: 80-200 g/m², powder coating thickness: 20-60μm
- ▲ The gorgeous metallic decoration effects provided by the coatings include 3D, chameleonic, silvery and golden glittering. Well adhering to the base plate, the coatings are also easy to process and form and possess good weather resistance and outdoor stability. When used in general environments, the anti-corrosion performance may last for 7-8 years, depending on the coating mass and powder coating layers.
- ▲ Scopes of application: building materials, decoration, outdoor wall panel, ceiling, steel door, household appliance, etc.



装饰系列
Decoration Series



- ▲ 钢板强度有CQ一般商用级、DQ一般冲压用、HSS高强结构钢、FH 全硬钢
- ▲ 板厚0.17-1.2mm，宽度600-1250mm，镀层量80-200 g/m²，涂层厚度20- 60 μ m
- ▲ 涂层具有天然木纹的立体质感，轻质、美观、耐用、防腐蚀等特点，可用于直接加工，为建筑、家具等行业提供了一种新型原材料，起到了以钢代木、高效施工、节约资源、保护生态环境的效果。
- ▲ 可用于建材、装饰、外墙板、天花板、钢制门、家电、家具等产品

- ▲ Strength of steel plate: commercial quality (CQ), drawing quality (DQ), high strength steel (HSS) and full hard steel (FH)
- ▲ Plate thickness: 0.17-1.2mm, width: 600-1250mm, coating mass: 80-200g/m², powder coating thickness: 20-60 μm
- ▲ The coatings are light, beautiful, durable, with natural 3D wood-grain textures and anti-corrosion property, and are suitable for direct processing. In construction, furniture and other industries, they serve as a new type of raw materials featuring substitution of wood with steel, efficient construction, resources conservation and ecological environment protection.
- ▲ Scopes of application: building materials, decoration, outdoor wall panel, ceiling, steel door, household appliance, furniture, etc.

木纹板
Wood-grain Coated Steel Sheet



静电粉末涂层其他纹理板
Other-texture Coated Steel Sheet

装饰系列
Decoration Series

- ▲ 钢板强度有CQ一般商用级、DQ一般冲压用、HSS高强结构钢、FH全硬钢
- ▲ 板厚0.17-1.2mm，宽度600-1250mm，镀层量80-200g/m²，涂层厚度20- 60 μ m
- ▲ 可提供水纹、花纹、皱纹、砂纹等多种纹理，纹理清晰、色彩绚丽、风格古朴，极具美感
- ▲ 可用于建材、装饰、外墙板、天花板、酒柜、家电、家具等产品



- ▲ Strength of steel plate: commercial quality (CQ), drawing quality (DQ), high strength steel (HSS) and full hard steel (FH)
- ▲ Plate thickness: 0.17-1.2mm, width: 600-1250mm, coating mass: 80-200g/m², powder coating thickness: 20-60μm
- ▲ The products are of various clear textures, e.g. water waves, decorative patterns, wrinkles and sand grains. They are gorgeous in color, classic in style and wonderful in aesthetics.
- ▲ Scopes of application: building materials, decoration, outdoor wall panel, ceiling, wine cabinet, household appliance, furniture, etc.



静电粉末涂层自清洁板
Easy-cleaning Coated Steel Sheet

功能系列
Function Series

- ▲ 钢板强度有CQ一般商用级、DQ一般冲压用、HSS 高强结构钢、FH 全硬钢
- ▲ 板厚0.17-1.2mm，宽度600- 1250mm，镀层量80-200g/m²，涂层厚度20- 60 μ m
- ▲ 具有良好的防污自洁功能，可有效防止灰尘油污渗入，无须人工刻意清洁，减少了清洁成本，始终保持亮丽如新，并降低了因人工清洁所造成的安全隐患
- ▲ 可用于高层建筑外墙板、空气污染较重工业区厂房等

- ▲ Strength of steel plate: commercial quality (CQ), drawing quality (DQ), high strength steel (HSS) and full hard steel (FH)
- ▲ Plate thickness: 0.17-1.2mm, width: 600-1250mm, coating mass: 80-200g/m², powder coating thickness: 20-60 μm
- ▲ The products' good antifouling and self-cleaning functions can effectively prevent the permeation of dust and greasy dirt, keeping them forever bright. As a result, manual cleaning and the corresponding cost are saved, and the potential safety hazards are reduced at the same time.
- ▲ Scopes of application: outdoor wall panels of high rises, workshops in the industrial districts severely-stricken by air pollution, etc.



静电粉末涂层抗菌板
Antibacterial Coated Steel Sheet

功能系列
Function Series

- ▲ 钢板强度有CQ一般商用级、DQ一般冲压用、HSS高强结构钢、FH全硬钢
- ▲ 板厚0.17-1.2mm，宽度600-1250mm，镀层量80-200g/m²，涂层厚度20-60 μ m
- ▲ 涂层中含有高效抗菌剂，对大肠杆菌，金黄色葡萄球菌、铜绿假单胞菌等，具有极强的抑菌功效
- ▲ 可用于厨房电器、家用电器、医疗设备及对环境卫生要求较高的场所

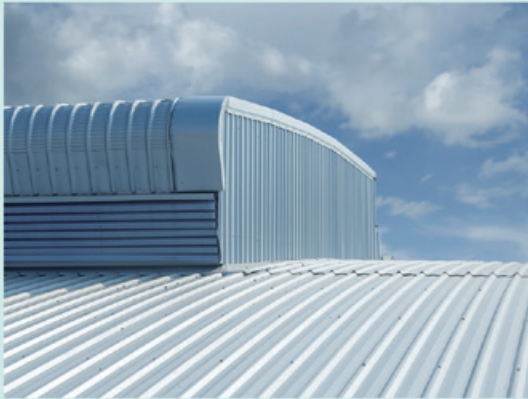


- ▲ Strength of steel plate: commercial quality (CQ), drawing quality (DQ), high strength steel (HSS) and full hard steel (FH)
- ▲ Plate thickness: 0.17-1.2mm, width: 600-1250mm, coating mass: 80-200g/m², powder coating thickness: 20-60μm
- ▲ The coating contains high-efficient antibacterial agents, which effectively prevent the multiplying of escherichia coli, staphylococcus aureus, pseudomonas aeruginosa and the like.
- ▲ Scopes of application: kitchen and household appliance, medical facilities and places with high requirements for environmental health



静电粉末涂层隔热节能板
Heat-insulating Energy-saving Coated Steel Sheet

功能系列
Function Series



- ▲ 钢板强度有CQ一般商用级、DQ一般冲压用、HSS 高强结构钢、FH全硬钢
- ▲ 板厚0.17-1.2mm，宽度600-1250mm，镀层量80-200g/m²，涂层厚度20-60 μ m
- ▲ 隔热节能板可以有效反射太阳光照热源，降低建筑物室内温度，减少因使用空调所消耗的能源
- ▲ 可用于建筑屋面板、外墙板、车棚等

- ▲ Strength of steel plate: commercial quality (CQ), drawing quality (DQ), high strength steel (HSS) and full hard steel (FH)
- ▲ Plate thickness: 0.17-1.2mm, width: 600-1250mm, coating mass: 80-200g/m², powder coating thickness: 20-60μm
- ▲ By reflecting sunlight, the sheet helps to lower indoor temperature and reduce the energy consumption of air conditioners in a natural way.
- ▲ Scopes of application: building roofing, outdoor wall panel, car roof, etc.

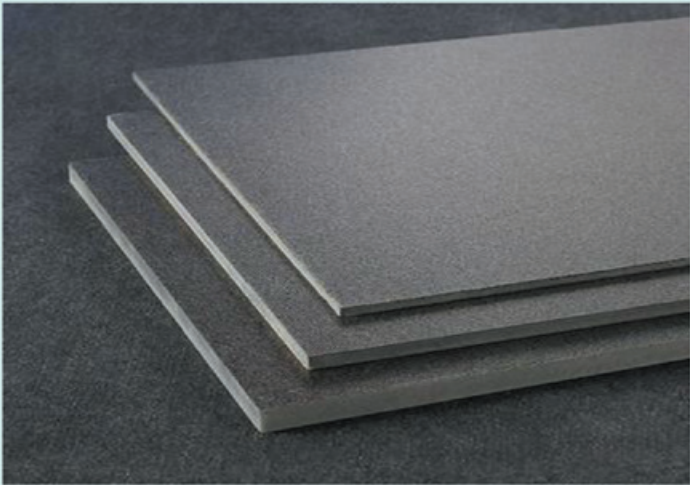
静电粉末涂层阻燃板
Fire-retardant Coated Steel Sheet

工业系列
Industry Series

- ▲ 钢板强度有CQ一般商用级、DQ一般冲压用、HSS高强度结构钢、FH全硬钢
- ▲ 板厚0.17-1.2mm，宽度600-1250mm，镀层量80-200g/m²，涂层厚度20-60 μ m
- ▲ 采用高效阻燃聚合物，抑制火焰对结构物质的加速破坏，争取救援时间，保障人员及财产安全
- ▲ 适用于电气产品、高低压开关柜及有易燃隐患的场所



- ▲ Strength of steel plate: commercial quality (CQ), drawing quality (DQ), high strength steel (HSS) and full hard steel (FH)
- ▲ Plate thickness: 0.17-1.2mm, width: 600-1250mm, coating mass: 80-200g/m², powder coating thickness: 20-60 μ m
- ▲ Efficient flame-retardant polymer is employed to suppress the damage to the structures by fire, so as to gain more time for personnel and property rescue.
- ▲ Scopes of application: electrical products, HV/LV switch cabinets and places of fire risks



静电粉末涂层抗静电板
Anti-static Coated Steel Sheet

工业系列
Industry Series

- ▲ 钢板强度有CQ一般商用级、DQ一般冲压用、HSS高强度结构钢、FH全硬钢
- ▲ 板厚0.17-1.2mm，宽度600-1250mm，镀层量80-200g/m²，涂层厚度20- 60 μ m
- ▲ 涂层静电阻可达10⁵-10¹¹，可有效传导电流、消散电荷
- ▲ 适用于电子工业、石油工业、纺织工业、橡胶工业等相关领域



- ▲ Strength of steel plate: commercial quality (CQ), drawing quality (DQ),high strength steel (HSS) and full hard steel (FH)
- ▲ Plate thickness: 0.17-1.2mm, width: 600-1250mm, coating mass:80-200g/m², powder coating thickness: 20-60μm
- ▲ The electrostatic resistance of the coating can reach as high as 10⁵-10¹¹, sufficing to conduct current and dissipate electric charges effectively.
- ▲ Scopes of application: electronic, petroleum, textile, rubber industries and other related fields



静电粉末涂层耐高温板
High-temperature Resistant Coated Steel Sheet

工业系列
Industry Series

- ▲ 钢板强度有CQ一般商用级、DQ一般冲压用、HSS高强结构钢、FH全硬钢
- ▲ 板厚0.17–1.2mm，宽度600–1250mm，镀层量80–200g/m²，涂层厚度20– 60 μ m
- ▲ 可根据使用要求，提供200–350℃不同耐温板
- ▲ 适用于烘烤炉、汽车排气筒等有耐热要求的产品



- ▲ Strength of steel plate: commercial quality (CQ), drawing quality (DQ), high strength steel (HSS) and full hard steel (FH)
- ▲ Plate thickness: 0.17-1.2mm, width: 600-1250mm, coating mass: 80-200g/m², powder coating thickness: 20-60 μ m
- ▲ Products of various temperature-resistant capabilities from 200 to 350℃ can be provided as required.
- ▲ Scopes of application: products with heat-resistant requirements, e.g. baking ovens and exhaust funnels of autos



静电粉末涂层PCM 家电板
Powder Coated PCM Household Appliance Steel Sheet

家电系列
Household Appliance Series

- ▲ 钢板强度有CQ一般商用级、DQ一般冲压用、DDQ深冲压用
- ▲ 板厚0.2–1.2mm，宽度300–1250mm，涂层厚度30–60 μ m
- ▲ 具有良好的成型加工性、涂层耐腐蚀性和柔韧性，同时具有良好的经济性。在环保效应、外观效果等方面均优于传统后加工涂装工艺，生产效率大幅提高，节能效应超过50%
- ▲ 粉末涂层PCM家电板为符合RoHS指令的环保产品
- ▲ Strength of steel plate: commercial quality (CQ), drawing quality(DQ)and deep drawing quality (DDQ)
- ▲ Plate thickness: 0.2-1.2mm, width: 300-1250mm, powder coating thickness: 30-60μm
- ▲ The economical products are of good formability, processability, flexibility and corrosion resistance. Compared to those manufactured through traditional post-processing coating procedures, they boast a better appearance, highly-increased production efficiency, energy conservation of over 50%, and extraordinary environmentally-friendly features.
- ▲ Powder Coated PCM House Appliance Steel Sheets are environmentally-friendly products compliant with RoHS Directive.

涂层应用选择 Application of Coating	应用产品 Applicable Products	性能特点 Performance Features
耐高温 For High- temperature Resistance	烤箱、微波炉、面包机 Oven, microwave oven, bread maker	良好的耐热性，耐污染性，耐湿热性 Good heat, humidity and stain resistance
湿用 For Wet Occasions	洗衣机、热水器、洗碗机 Washing machine, water heater, dishwasher	良好的耐洗涤性，耐沸水性，耐磨性 Good launderability, boiling- water resistance and abrasive resistance
户外应用 For Outdoor Purposes	空调室外机 Outdoor unit of air conditioner	良好的户外耐候性，防腐蚀性 Good outdoor weather and corrosion resistance
其他 Others	冰箱、冷柜、空调室内机 Refrigerator, freezer, indoor unit of air conditioner	良好的装饰性，耐磨性，耐污性 Good decorative effects, abrasive resistance and anti-fouling performance

